

2020A

2020 9 10



( 2 )

2017A(

2 )

2020A

2020A

2020 9 10

2020 9 10

1	.....	1
1.1	.....	1
1.2	.....	1
1.3	.....	1
1.4	.....	1
1.5	.....	3
2	.....	3
3	.....	4
3.1	.....	4
3.2	.....	4
4	.....	8
4.1	.....	8
4.2	.....	9
5	.....	10
5.1	.....	10
5.2	.....	11
5.3	.....	12
5.4	.....	13
6	.....	14
6.1	.....	14
6.2	.....	14
6.3	.....	14
7	.....	15
7.1	.....	15
7.2	.....	15
7.3	.....	15
8	.....	16
8.1	.....	16
8.2	.....	16
8.3	.....	17
8.4	.....	17
9	.....	18
9.1	.....	18
9.2	.....	18
9.3	.....	19
9.4	.....	20
9.5	.....	20
10	.....	21
10.1	.....	21
10.2	.....	23
10.3	.....	24
10.4	.....	29
10.5	.....	30
10.6	.....	32
10.7	.....	33
10.8	.....	40





1.5

2.1-1

2.1-1

1

2

3

4

5

6

3.1



1

2

3

4

5)

41

1

2

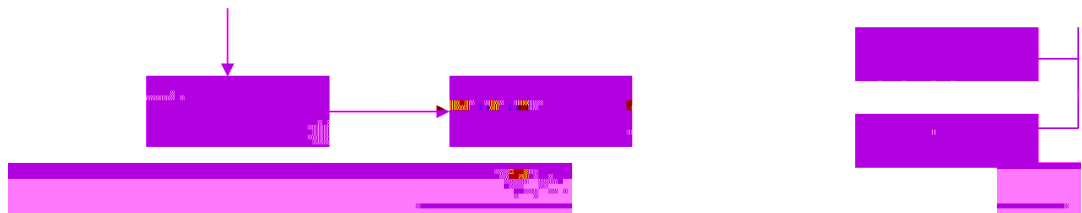
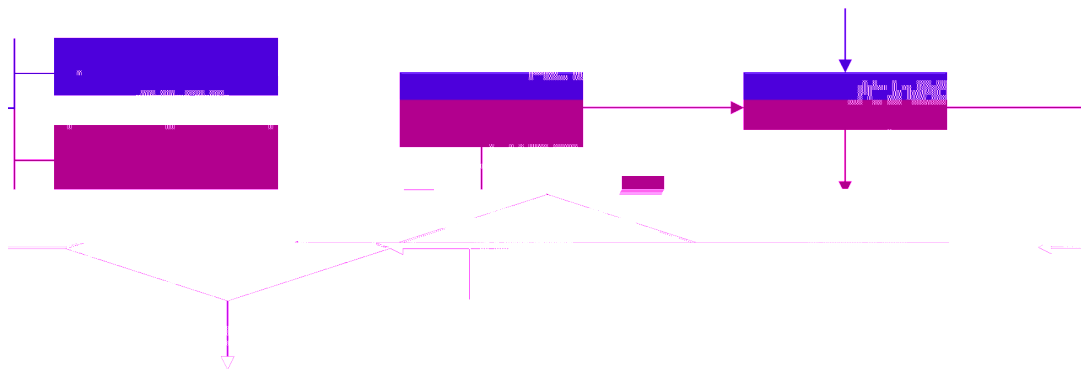
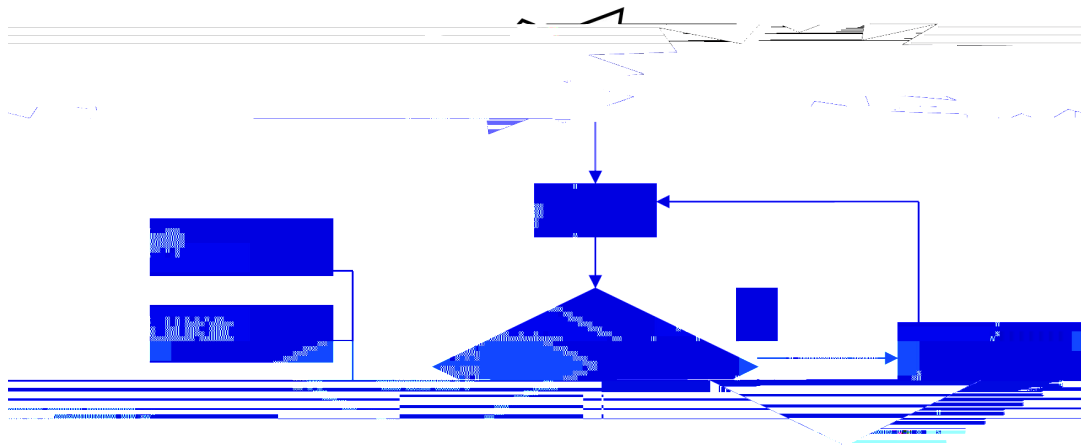
Ä3

c  
d  
e  
f  
g  
h  
i  
3

5.1

5.1-1


5.2



5.3

1

2

3

1

2

1

2

C

7

È ø( P

0 \$q° ø( P %\$•h@'ã \$q° eP

№'C8

2

3

4

2

3

6.1

1

7.1

1

2

3

4

5

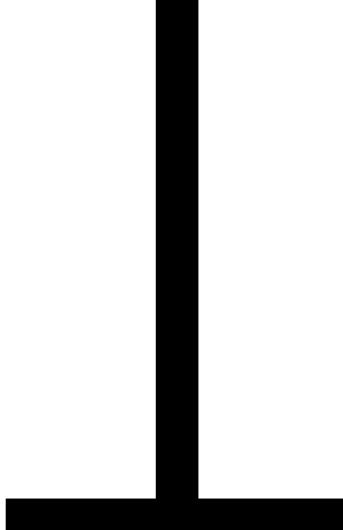
7.2

1

2

7.3

1



3

8.1

2

3

4

5

8.3

8.4

## 9.1

1

2

1

2

3

4

5

6

7

8

9

1

2

3

## 9.2

1

2

3

4

5

9.3

1

2

3



10.1.1

1996

7.40

( )

1700

512

1991

10. 8. 1

10. 8. 2

### 10. 1-1

		668
		230601
		1993 9
		63689835 13905692671
		63689085
		2791
		61, 681. 7335
		20

### 10.1.2

### 10. 1-2

						m <sup>2</sup>	m <sup>2</sup>		
1		313		5		30500	30320	1	
2						13622	14791	1	
3						8436	7926	1	
4						15095	13867	1	
5						19825	19735	1	
6						23106	22052	1	
7						25704	25408	1	
8	4				12 1 1	10030 55	10030 226	1	084
9						190	190	1	
10		35KV				365	650	2	
11						7510	25900 55	6	
12	6030	0030		5					

10.1.3

10

360m<sup>2</sup>

10

324m<sup>2</sup>

21m<sup>2</sup>

15m<sup>2</sup>

14m<sup>2</sup>

10.2-1

1		2014 13
2		2007 69
3	2019	2019 29
4		2013 4
5		708
6		2007 493
7	2013	645
8		2
9		2009 21
10		2009 141
11		2018 3 21
12		2018 3 21
13		2018 24
14		GB/T29639-2013
15		GB6441-1986

16		AC 79011-20

10.3

10.3-1

- 0551- 63689835      13905692671
- 0551- 63689612      13955192650
- 0551- 63689526      13705692935  
13866102135  
13856006977
- 0551- 63689511      13505510051  
13955177267  
13956080714  
13955159790  
13955146322  
13856070408  
13956043661  
13955150989  
13966741051  
15256985859  
13739258453  
13856907697  
15804291512  
13955150989  
13956930396  
13956043661
- 13855138318
- 13515643075
- 18788899500
- 15856995525
- 13955164509
- 13966768851
- 13955142062
- 15956970511
- 18134512393
- 13955133909

138-



### 10.3.2.1





10.3.2.3



10.4

10.4-1

				/	
1					
2				10	
				18	
3				13	
4				897	
				929	
				229	
		4KG	4KG	4193	
		35KG	35KG	48	
				33	
				1	
				8	
				16	
				42	
				4	
5				2	
				11	
6				21	

10.5

"

"

10.5-1

1		1		
2		35		
3		24		
4		40		
5		24		
6		15		
7		25		
8		1		
9		1		
10		1		
11		3		
12		1		
13		2		
14		5		
15		500		
16		1000		
17		1000		

18

1000

19

500 /

800

10.6

10.6-1

---

---


10.7

1  
2  
3

1					
2					
3					
4					
5					
6					
	1. 2. 3.				
			/	/	
1				0551 - 63689612	13955192650
2					13955164509
3					13705692935
4				0551 - 63689526	13866102135
5					13856006977
6				0551 - 63689511	13505510051
7					13955177267
8					13956080714
9					13955159790
10					13955146322
11					13856070408
12					13956043661
13					13955150989

1					
2					
3					
1.					
2.					
			/	/	
1				13955150989	
2				13956930396	
3				13956043661	
4				13855138318	
5				13515643075	

---

1  
2  
3  
4

1.  
2

/

/

1  
2

18788899500  
15856995525





10.8

%

ž